

State of Wyoming Corner Record

(In compliance with the **CORNER PERPETUATION AND FILING ACT**, Wyoming Statutes, 1997 Section 33-29-140 et. seq., and the Rules and Regulations of the Board of Professional Engineers and Professional Land Surveyors)

Reverse side of this form may be used if more space is needed.

Record of original survey and citation of source of historical information (if corner is lost or obliterated). Description of corner monumentation evidence found and/or monument and accessories established to perpetuate the location of this corner. Sketch of relative location of monument, accessories, and reference points with course and distance to adjacent corner(s) (if determined in this survey). Method and rationale for reestablishment of lost or obliterated corner.

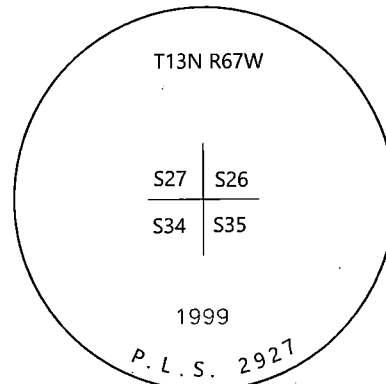
LOCATION: Northeast Corner of Section 34, T13N, R67W, 6th Principal Meridian, Laramie County.

RECORD: GLO - Set granite boulder 18X15X11

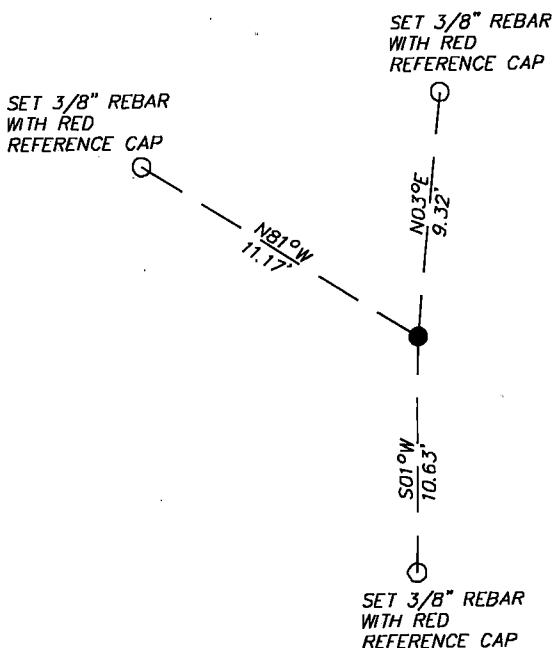
1999 - Paul Reid, LS 2927, files corner record on found 18x14x4 granite stone with two chiseled grooves on the east face and one chiseled groove on the south face. Set 2.5" aluminum post, 30" long, 27" in the ground with a 3.25" aluminum cap marked as noted. Buried a 1x1x2 orange fluorescent magnetic module in the bottom of the monument hole. Buried the original stone south as a memorial and raised a collar of stone around the monument. Set a 5' steel fence post witness 1' north.

RECOVERED: 2019 - Westwood field crews recover the aluminum cap as described in the 1999 Reid corner record.

RESET: Accepting location of the aluminum cap as the location of the corner. Ties were set as shown.



Monument Inscription



Date of Field Work: 9/11/2019

Office Reference: 22237.01

Cross Index Plat

	1	2	3	4	5	6	7	8	9	10	11	12	13	14	15	16	17	18	19	20	21	22	23	24	25		
A																											A
B		+	+	+	+	+	+	+	+	+	+	+	+	+	+	+	+	+	+	+	+	+	+	+	+		B
C		+	6	+	+	+	5	+	+	+	+	4	+	+	+	3	+	+	+	+	2	+	+	+	1		C
D		+	+	+	+	+	+	+	+	+	+	+	+	+	+	+	+	+	+	+	+	+	+	+	+		D
E		+	+	+	+	+	+	+	+	+	+	+	+	+	+	+	+	+	+	+	+	+	+	+	+		E
F		+	+	+	+	+	+	+	+	+	+	+	+	+	+	+	+	+	+	+	+	+	+	+	+		F
G		+	7	+	+	+	8	+	+	+	+	9	+	+	+	10	+	+	+	+	11	+	+	12		G	
H		+	+	+	+	+	+	+	+	+	+	+	+	+	+	+	+	+	+	+	+	+	+	+	+		H
J		+	+	+	+	+	+	+	+	+	+	+	+	+	+	+	+	+	+	+	+	+	+	+	+		J
K		+	+	+	+	+	+	+	+	+	+	+	+	+	+	+	+	+	+	+	+	+	+	+	+		K
L		+	18	+	+	+	17	+	+	+	+	16	+	+	+	15	+	+	+	+	14	+	+	13		L	
M		+	+	+	+	+	+	+	+	+	+	+	+	+	+	+	+	+	+	+	+	+	+	+	+		M
N		+	+	+	+	+	+	+	+	+	+	+	+	+	+	+	+	+	+	+	+	+	+	+	+		N
O		+	+	+	+	+	+	+	+	+	+	+	+	+	+	+	+	+	+	+	+	+	+	+	+		O
P		+	19	+	+	+	20	+	+	+	+	21	+	+	+	22	+	+	+	+	23	+	+	24		P	
Q		+	+	+	+	+	+	+	+	+	+	+	+	+	+	+	+	+	+	+	+	+	+	+	+		Q
R		+	+	+	+	+	+	+	+	+	+	+	+	+	+	+	+	+	+	+	+	+	+	+	+		R
S		+	+	+	+	+	+	+	+	+	+	+	+	+	+	+	+	+	+	+	+	+	+	+	+		S
T		+	30	+	+	+	29	+	+	+	+	28	+	+	+	27	+	+	+	+	26	+	+	25		T	
U		+	+	+	+	+	+	+	+	+	+	+	+	+	+	+	+	+	+	+	+	+	+	+	+		U
V		+	+	+	+	+	+	+	+	+	+	+	+	+	+	+	+	+	+	+	+	+	+	+	+		V
W		+	+	+	+	+	+	+	+	+	+	+	+	+	+	+	+	+	+	+	+	+	+	+	+		W
X		+	31	+	+	+	32	+	+	+	+	33	+	+	+	34	+	+	+	+	35	+	+	36		X	
Y		+	+	+	+	+	+	+	+	+	+	+	+	+	+	+	+	+	+	+	+	+	+	+	+		Y
Z		+	+	+	+	+	+	+	+	+	+	+	+	+	+	+	+	+	+	+	+	+	+	+	+		Z
	1	2	3	4	5	6	7	8	9	10	11	12	13	14	15	16	17	18	19	20	21	22	23	24	25		

Firm/Agency, Address

Westwood Professional Services
3701 12th St. N. Ste. 206
St. Cloud, MN 56303

Telephone Number: (320)-253-9495

This corner record was prepared by me or under my direction and supervision.

SEAL & SIGNATURE



RECP #: 775822
 RECORDED 4/15/2020 AT 10:15 AM BK# 2668 PG# 254
 Debra K. Lee, CLERK OF LARAMIE COUNTY, WY PAGE 1 OF 1

Corner Name Northeast Corner Section 34, T 13 N, R 67 W, 6th P.M.

Cross-Index No.: V-17

County: Laramie Wyoming

SBRPEPLS/PLSW: March 1994; PLSW January 1998